



Accommodation at Grittleton House

The House

We are pleased to be able to offer eleven individually designed and spacious bedrooms in the main house. All bedrooms are beautifully furnished with super king beds (with the exception of one twin room), all have flat screen TV's, tea and coffee facilities, bottled water and snacks, along with a hairdryer and toiletries. The en-suite luxury bathrooms are all fitted with large showers, two of the largest bedrooms also have a free-standing bath. For those with a family, two of our bedrooms offer additional sleeping, suitable for a family of up to four, alternatively we have two interconnecting bedrooms, which have a shared bathroom. Something to suit everyone.

Please note the House bedrooms are subject to availability on the night prior, unless booking a 'Yours for the Weekend' package.

The Old Stables

The converted Old Stables are located within the grounds of Grittleton House, just a short walk from the main House (flat shoes recommended for walking to and from). The rooms have been sympathetically converted and are all shower en-suite, with tea and coffee facilities. The Stables offers simple and cost-effective accommodation. The bedrooms are located on the ground and first floor. A TV is available in the lounge area in The Clock Tower. an iron & ironing board is also located in this building (please note hairdryers are not provided).

If booking a family room, both in the House or Stables, there is an additional charge of £29 for over 16's & £20 for under 16's. Under 2's are welcome at no additional charge, cots are **not** provided, please bring your own.

Breakfast

Breakfast will be served in the Morning Room at the House, this is for **ALL** guests. Breakfast is served between 8.30am & 9.30am each morning. Guests can enjoy a hot and cold buffet breakfast.

Check in & out

Check in is available from 4.00pm on the day of your arrival. Check out on your departure day is by 10.30am.



Booking Conditions

All bookings for both Grittleton House and the Old Stables, must be made via the wedding party, the following minimum booking requirements apply.

All accommodation is subject to availability and cannot be guaranteed particularly on the night prior (unless booking a 'Yours for the Weekend' Package), this is due to other booking requirements. A Saturday wedding have first refusal on half (10) the stables bedrooms the night prior if required.



Bedrooms Night Prior

* subject to availability normally confirmed 6 months prior to wedding	House only		Stables only		House & Stables (when booked together)			
					House		Stables	
	min	max	min	max	min	max	min	max
Friday wedding	8 *	11 *	10 *	10 / 20 *	8 *	11 *	2 *	10 / 20 *
Saturday wedding	8 *	11 *	10 *	10 / 20 *	8 *	11 *	2 *	10 / 20 *
Sunday wedding	8 *	11 *	10 *	10 / 20 *	8 *	11 *	2 *	10 / 20 *
Mon/Thurs wedding	8 *	11 *	10 * [^]	10 / 20 * [^]	8 *	11 *	2 * [^]	10 / 20 * [^]

Bedrooms Night Of

	House only		Stables only		House & Stables (when booked together)			
					House		Stables	
	min	max	min	max	min	max	min	max
Friday wedding	8	11	n/a	n/a	8	11	10	10 / 20
Saturday wedding	8 **	11	n/a	n/a	8 **	11	12	20
Sunday wedding	8	11	n/a	n/a	8	11	4	10 / 20
Mon/Thurs wedding	8	11	n/a	n/a	8	11	4 * [^]	10 / 20 * [^]

* where available / ** if accommodation not included in venue hire / [^] normally only during low season & six week school summer holidays



Room Overview

The House – Anne Marie & Lady Edith are on the first floor & offer an elegant free-standing bath in addition to an invigorating rain forest shower. Joseph Neeld, Sir Audley, Colonel William, Lady Eliza & Sir John are all on the Mezzanine floor which is another level up. Lady Eliza can only be booked in conjunction with Sir John. Sir John & Lady Eliza can either be booked as an interconnecting family room with bathroom or as two individual rooms with a shared bathroom accessed via the Mezzanine corridor (the interconnecting doors can be locked). Algernon & Rundell are lofty attic rooms offering a large seating area which becomes additional sleeping (for up to 16-year-olds). Our newest two rooms, The Firs & Keepers, are located on the West side of the House. The rooms have been tastefully decorated to reflect the countryside and are accessed via the original stone and wrought iron curved staircase.

The Stables Clock Tower – All bedrooms are on the first floor, please note the stairs are very steep, ground floor rooms available in the mews. Rooms 5, 6 and 7 are beautiful, beamed rooms with sky lights only.

The Stables Mews – 12 of the 13 rooms are located on the ground floor. Where possible we have kept original features to maintain the charm. Rooms 10 – 13 are cleverly converted original stables, please note there are no opening windows. Room 14 has a bathroom suitable for disabled users. Room 16 is on the first floor.





	Room	Room type	Price*	Maximum number of guests	Space for cot	Floor Level
The House	Anne Marie	Double	£260	2 adults	yes	1 st
	Joseph Neeld	Double	£260	2 adults	yes	2 nd
	Sir Audley	Double	£260	2 adults	yes	2 nd
	Lady Edith	Double	£260	2 adults	yes	1 st
	Algernon	Double / Family	£240	2 adults plus 2 up to aged 16 in single sofa beds	yes	3 rd
	Rundell	Double / Family	£240	2 adults plus 2 up to aged 16 in single sofa beds	yes	3 rd
	Colonel William	Double	£240	2 adults	yes	2 nd
	Sir John	Double	£240	2 adults	yes	2 nd
	Lady Eliza **	Twin	£120	2 adults	no	2 nd
	<i>** Lady Eliza cannot be booked without Sir John however when both booked, they can be a interconnecting suite or 2 separate rooms with a shared bathroom</i>					
The Clock Tower	Keepers	Double	£240	2 adults	yes	lower 1st
	The Firs	Double	£240	2 adults	yes	2 nd
	1	Single	£80	1 adult	no	1 st
	2	Double	£120	2 adults	yes	1 st
	3	Small Twin	£120	2 adults	no	1 st
	4	Double / Family	£120	2 adults plus 2 children in bunk	yes	1 st
	5	Double	£120	2 adults	no	1 st
	6	Double / Family	£120	2 adults plus 2 children in bunk	no	1 st
	7	Twin / Family	£120	2 adults plus 2 children in bunk	no	1 st
	10	Double / Family	£120	2 adults plus 2 children in bunk	yes	ground
The Mews	11	Double / Family	£120	2 adults plus 2 children in bunk	yes	ground
	12	Double / Family	£120	2 adults plus 2 children in bunk	yes	ground
	13	Double / Family	£120	2 adults plus 2 children in bunk	yes	ground
	14	Twin Disabled	£120	2 adults	no	ground
	15	Double / Family	£120	2 adults plus 4 children in 2 bunks	yes	ground
	16	Quad	£120	4 guests in 4 single beds (not suitable for small children)	no	1 st
	17	Double / Family	£120	2 adults plus 4 children in 2 bunks	yes	ground
	18	Twin / Family	£120	2 adults plus 2 children in bunk	no	ground
	19	Double	£120	2 adults	no	ground
	20	Twin	£120	2 adults	no	ground
	21	Double / Family	£120	2 adults plus 2 children in bunk	no	ground
	22	Double / Family	£120	2 adults plus 2 children in bunk	yes	ground

Current pricing for 2024, all prices are subject to review. *Price is for 2 people only (excluding single room) additional guests will incur an extra charge

If booking a family room, both in the House or Stables, there is an additional charge of £29 for over 16's & £20 for under 16's. Under 2's are welcome at no additional charge, guests are requested to bring their own travel cot.

Non-residential guests are welcome to join for breakfast, over 16's the cost is £18 per person & under 16's the cost is £12.





Anne Marie



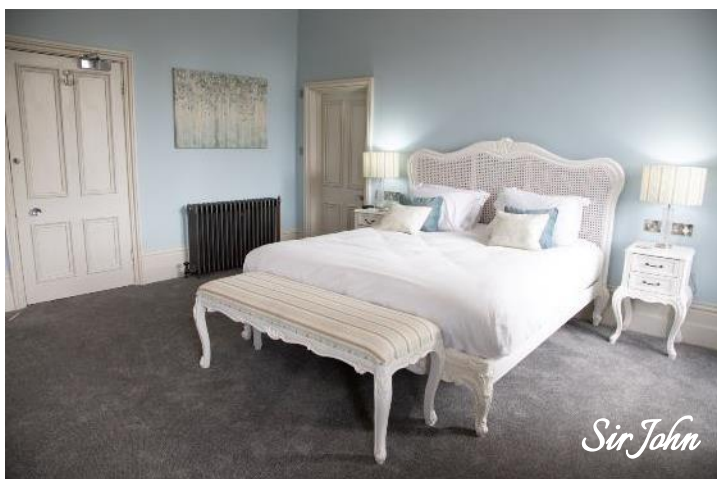
Lady Edith



Joseph Neeld



Sir Audley



Sir John



Lady Eliza



Colonel Williams



Rundell



Algernon



Keepers



The Firs





The Stables

